



Pearl Mussel Project

List of Priority Commonages



February 2019

Pearl Mussel Project
Bell Height | Kenmare | Co. Kerry | Ireland
info@pmproject.ie
www.PearlMusselProject.ie



1 CONTENTS

1	INTRODUCTION	1
2	PRIORITY RANKING	1
3	PRIORITY COMMONAGES	2

2 TABLES

Table 1: Commonage parcels (priority and non priority) within the eight catchment areas.....	3
----------------------------------------------------------------------------------------------	---

3 FIGURES

Figure 1: Connectivity categories used to rank commonage parcels.	1
Figure 2: Watercourse to land area ratio used for priority ranking.....	2
Figure 3: Priority commonage parcels in the Bundorragha catchment.....	6
Figure 4: Priority commonage parcels in the Caragh catchment.....	7
Figure 5: Priority commonage parcels in the Dawros catchment.....	8
Figure 6: Priority commonage parcels in the Glaskeelan catchment.	9
Figure 7: Priority commonage parcels in the Owenriff catchment.....	10
Figure 8: Priority commonage parcels in the Ownagappul catchment.....	11

4 Introduction

A total of 181 LPIS commonage parcels occur within, or partly within, the eight Pearl Mussel Programme catchments. A review of all commonage parcels within each catchment has identified 39 priority commonage parcels for inclusion in the Programme in 2019 (Table 1; Figure 3 - Figure 8), based on their potential contribution towards the overall aims of the project. The process behind selecting these commonages is presented in the following sections.

5 Priority ranking

Initially all commonages were assigned a priority ranking based on proximity and connectivity and to freshwater pearl mussel rivers. Following this each parcel was ranked within these categories depending on the ration of watercourses to parcel area.

5.1 Proximity and connectivity to freshwater pearl mussel

In order to identify priority commonage parcels, the proximity and connectivity of each commonage parcel to freshwater pearl mussel habitat was assessed. Each commonage parcel was assigned a rank according to one of the following four connectivity categories (listed in order of decreasing priority):

1. Lands adjoining freshwater pearl mussel habitat
2. Lands along EPA mapped watercourses upstream of freshwater pearl mussel habitat
3. Lands along EPA mapped watercourses upstream of a lake, which itself is upstream of freshwater pearl mussel habitat
4. Lands within the catchment, but removed from any EPA mapped watercourse(s)

A final connectivity category (5) was also assigned to parcels that only partly occur within the catchment boundary. The area of these parcels within the catchment boundary does not comprise a viable management unit. These lands are generally peripheral to the catchment boundary and are seen as low priority. Commonage parcels less than 5ha in extent were also considered at the lowest priority level for entry into the Programme, unless they are located in a critical site as determined by the project team.

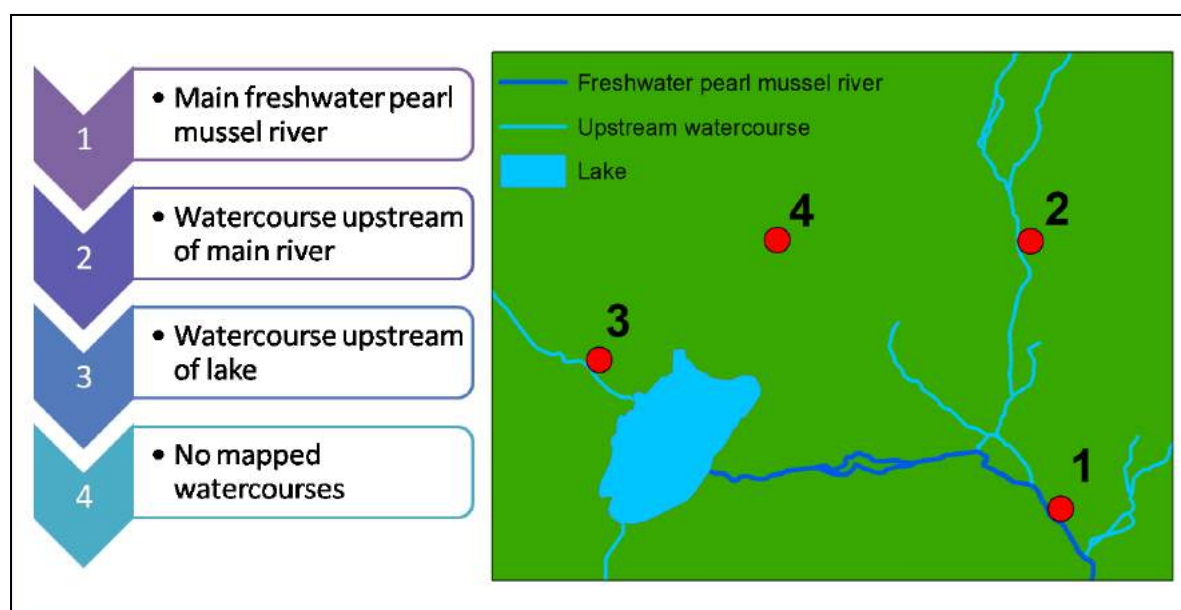


Figure 1: Connectivity categories used to rank commonage parcels.

Following this initial ranking process, parcels are further ranked according to a ratio of mapped watercourse length to land area. This means that within each category the highest rank will be assigned to the commonage parcel with the highest proportion of watercourses in relation to land area (Figure 2).

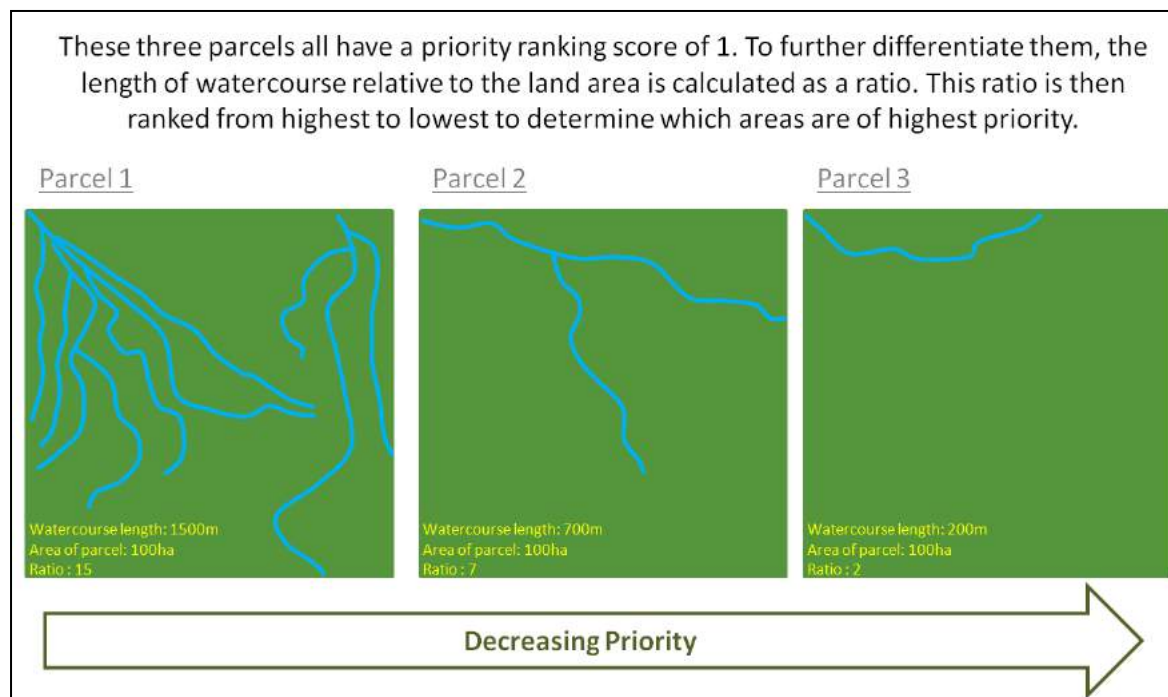


Figure 2: Watercourse to land area ratio used for priority ranking.

6 Priority commonages

The priority list of commonages for 2019 includes the highest ranking commonage parcels in each catchment, while also considering the extent of commonages at the catchment level. No priority commonage parcels were identified in the Kerry Blackwater or Currane catchments as all commonage parcels present were determined to be of low importance within the catchments as illustrated by their low connectivity category ranking.

Commonage shareholders in the priority commonage parcels are invited and encouraged to apply to join the Programme in 2019 during the initial recruitment window. The PMP Team will work closely with the commonage shareholders and their advisors with the aim of recruiting the maximum number of active shareholders. There is no guarantee that they will be accepted in the following year(s). Depending on PMP budget availability this list may be extended in future years of the Programme to include lower ranking commonage parcels.

In the case that a farmer with private land within the catchment expresses an interest in joining the programme on the basis of having a shareholding within a priority commonage parcel, then the private land in the farmer's ownership (occurring within the PMP catchment) must also be included within the Programme. In the case where a commonage participant has private lands outside of the catchment, those lands will not be included in the Programme.

Table 1: Commonage parcels (priority and non priority) within the eight catchment areas.

PMP Parcel Code (Overall rank within catchment)	Townland	Area ha (within catchment)	Proximity & connect category	Watercourse length to land area (m/ha)	2019 Priority
Bundorragha, County Mayo					
BU1	Lettereeragh	277.5	1	43.0	Yes
BU2	Tonatleva	222.6	1	7.5	Yes
BU3	Glenconnelly	666.7	2	13.9	Yes
BU4	Glencullin	671.0	2	11.2	Yes
BU5	Tawnyinlough	114.2	2	2.0	Yes
BU6	Tawnyinoran	388.4	2	0.1	Yes
BU7	Clashcame	0.7	3	76.3	No
BU8	Glennumera (Ed Erriff)	18.3	3	40.4	No
BU9	Clashcame	212.1	3	31.2	No
BU10	Kinnakillew	198.5	3	29.4	No
BU11	Glencullin	162.8	3	25.6	No
BU12	Glencullin	37.3	3	15.0	No
BU13	Glennumera (Ed Kilgeever)	56.6	3	9.6	No
BU14	Srahroosky	79.4	3	9.2	No
BU15	Glennumera (Ed Kilgeever)	80.6	3	5.4	No
BU16	Bundorragha	7.0	5	0	No
BU17	Derreenanabanagh	0.3	5	0	No
BU18	Derreenawinshin	3.1	5	0	No
BU19	Derry	1.4	5	0	No
BU20	Glenlaur	1.7	5	0	No
BU21	Glenkeen	10.2	5	0	No
BU22	Laghta Oughter	0.0	5	0	No
BU23	Dadreen	0.6	5	0	No
BU24	Mweelin	5.9	5	0	No
Caragh, County Kerry					
CA1	Cloon East	292.1	1	31.4	Yes
CA2	Cloon West	677.2	1	28.3	Yes
CA3	Lettergarriv	49.7	1	0.6	Yes
CA4	Dromalohurt	4.4	2	38.8	No
CA5	Dromalohurt	32.1	2	39.7	No
CA6	Boheeshil	78.8	2	38.8	No
CA7	Derryleagh	26.7	2	38.7	No
CA8	Dromalohurt	162.8	2	37.3	No
CA9	Lettergarriv	199.6	2	37.0	No
CA10	Cloghera Beg	21.5	2	17.9	No
CA11	Coomura	196.9	2	15.2	No
CA12	Derrynafeana (Killorglin)	3.4	2	15.0	No
CA13	Toornaneaskagh	127.4	2	13.0	No
CA14	Cloghera More	14.4	2	9.9	No
CA15	Dromalohurt	525.6	2	9.7	No
CA16	Neesha	123.3	2	9.6	No
CA17	Keel (Ed Lickeen)	315.9	2	9.5	No
CA18	Dromalohurt	93.8	2	6.1	No
CA19	Derreenanaryagh	310.5	2	5.9	No
CA20	Carriginane	41.5	2	5.8	No
CA21	Gortdirragh	42.4	2	5.8	No
CA22	Canknoogheda	17.2	2	5.3	No
CA23	Gortdirragh	71.3	2	4.8	No
CA24	Fermoyle (Sneem)	1.7	2	4.1	No
CA25	Dromalohurt	64.4	2	3.6	No
CA26	Maghanlawaun	16.7	2	3.5	No
CA27	Dromalohurt	429.3	2	3.1	No
CA28	Curavaha	29.8	2	2.9	No
CA29	Lyreboy	86.4	2	0.1	No
CA30	Shronahiree Beg	106.5	4	1.9	No
CA31	Derreenanaryagh	30.0	4	0	No
CA32	Maghanlawaun	5.8	4	0	No
CA33	Gortdirragh	76.5	4	0	No
CA34	Derreenanaryagh	0.8	5	0	No
CA35	Lauhir	3.1	5	0	No
CA36	Coombaha	0.0	5	0	No
CA37	Derreenageeha	0.7	5	0	No

PMP Parcel Code (Overall rank within catchment)	Townland	Area ha (within catchment)	Proximity & connect category	Watercourse length to land area (m/ha)	2019 Priority
CA38	Ballynakilly (Ed Glanbehy)	0.6	5	0	No
CA39	Ballynakilly Upper	0.5	5	0	No
CA40	Canearagh	1.4	5	0	No
CA41	Coolroe Upper	0.3	5	0	No
Currane, County Kerry					
CU1	Cloghvoola	61.8	2	38.7	No
CU2	Tooreenyduneen	126.2	2	19.4	No
CU3	Inchfarrannagleragh Glebe	85.3	2	15.3	No
CU4	Maghygreenane	475.1	3	20.4	No
CU5	Graigues	62.5	3	18.5	No
CU6	Coomavoher	208.6	3	16.3	No
CU7	Cloonaghlin	330.9	3	0.9	No
CU8	Coomnahorna East	12.2	5	18.2	No
CU9	Slievenashaska	14.3	5	10.9	No
CU10	Moneyflugh	6.0	5	2.2	No
CU11	Staigue	7.7	5	1.9	No
CU12	Bohacogram	1.7	5	0	No
CU13	Dromtine	0.1	5	0	No
CU14	Gowlanes	3.1	5	0	No
CU15	Gowlanes	1.0	5	0	No
CU16	Cahersavane	0.8	5	0	No
CU17	Dromnakilly	16.8	5	0	No
CU18	Bunaderreen	1.3	5	0	No
Dawros, County Galway					
DA1	Dawros More	2.0	1	51.2	Yes
DA2	Currywongaun	41.4	1	40.0	Yes
DA3	Dawros More	31.3	1	6.1	Yes
DA4	Shanaveag	18.4	2	35.1	Yes
DA5	Addergoole (Ballynahinch By)	382.7	2	34.8	Yes
DA6	Dawros More	17.0	2	28.5	Yes
DA7	Shanaveag	90.0	2	23.9	Yes
DA8	Lettergesh West	173.7	2	11.7	Yes
DA9	Mullaghglass	81.6	2	10.4	Yes
DA10	Currywongaun	154.1	2	5.1	Yes
DA11	Pollacappul (Ballynahinch By)	256.6	2	4.0	Yes
DA12	Addergoole (Ballynahinch By)	25.1	2	2.8	No
DA13	Kylemore (Ballynahinch By)	239.8	3	48.8	No
DA14	Kylemore (Ballynahinch By)	83.0	3	40.3	No
DA15	Kylemore (Ballynahinch By)	422.1	3	35.3	No
DA16	Mweelin	100.8	3	24.4	No
DA17	Kylemore (Ballynahinch By)	96.7	3	20.2	No
DA18	Mweelin	54.9	3	10.3	No
DA19	Lecknavarna	11.8	5	17.8	No
DA20	Lettergesh East	0.5	5	0	No
DA21	Lettergesh East	0.0	5	0	No
Glaskeelan, County Donegal					
GL1	Lacknacoo	5.2	2	65.3	Yes
GL2	Lacknacoo	73.5	2	39.7	Yes
GL3	Churchtown (Ed Gartan)	42.9	2	30.9	Yes
GL4	Churchtown (Ed Gartan)	65.6	2	11.3	Yes
GL5	Carrowtrasna (Ed Gartan)	111.0	2	8.0	Yes
GL6	Staghall Mountain East	2.0	3	157.6	No
GL7	Claggan North	6.5	3	79.9	No
GL8	Warrentown	13.7	3	48.4	No
GL9	Claggan North	26.0	3	20.2	No
GL10	Staghall Mountain East	44.1	3	2.2	No
GL11	Warrentown	61.1	3	0.7	No
GL12	Ardaturr	5.9	4	1.6	No
GL13	Ardaturr	2.6	4	0	No
GL14	Maghernashangan	23.6	4	0	No
GL15	Claggan Mountain South	0.1	5	0	No
Kerry Blackwater, County Kerry					
BL1	Maulcallee	27.2	2	29.8	No
BL2	Derreenafoyle	11.0	5	0	No

PMP Parcel Code (Overall rank within catchment)	Townland	Area ha (within catchment)	Proximity & connect category	Watercourse length to land area (m/ha)	2019 Priority
Owenriff, County Galway					
OR1	Rusheeny (Moycullen By)	2.2	1	64.4	Yes
OR2	Canrawer West	8.0	1	60.2	Yes
OR3	Canrawer West	17.3	1	23.3	Yes
OR4	Glengowla West	25.3	1	22.6	Yes
OR5	Glengowla West	10.9	1	2.9	Yes
OR6	Glengowla West	0.8	2	264.0	No
OR7	Rusheeny (Moycullen By)	0.6	2	217.8	No
OR8	Rusheeny (Moycullen By)	0.6	2	174.3	No
OR9	Rusheeny (Moycullen By)	3.1	2	85.8	No
OR10	Illeny	61.8	2	32.5	No
OR11	Rusheeny (Moycullen By)	84.1	2	32.0	No
OR12	Rusheeny (Moycullen By)	34.5	2	27.6	No
OR13	Rusheeny (Moycullen By)	33.3	2	25.5	No
OR14	Shannadullaghaun	84.1	2	24.5	No
OR15	Rusheeny (Moycullen By)	131.0	2	24.3	No
OR16	Clooshgereen	98.8	2	22.7	No
OR17	Glengowla West	21.6	2	17.1	No
OR18	Lettercraff	342.6	2	14.2	No
OR19	Lettercraffroe	98.3	2	9.1	No
OR20	Glengowla West	28.8	2	7.9	No
OR21	Claremount	38.4	2	1.1	No
OR22	Rusheeny (Moycullen By)	34.2	2	0.1	No
OR23	Glengowla West	0.3	2	0.0	No
OR24	Derryerglinna	176.6	3	1.2	No
OR25	Lettercraffroe	55.0	3	0.4	No
OR26	Cloghermore	28.8	3	0.3	No
OR27	Rusheeny (Moycullen By)	0.1	3	0.0	No
OR28	Rusheeny (Moycullen By)	1.6	3	0.0	No
OR29	Rusheeny (Moycullen By)	6.1	3	0.0	No
OR30	Glengowla West	0.2	4	0.0	No
OR31	Glengowla West	5.8	4	0.0	No
OR32	Glengowla West	4.7	4	0.0	No
OR33	Barnagorteeny	17.2	5	24.5	No
OR34	Glentrasna	19.9	5	23.3	No
OR35	Cloghermore	21.5	5	2.7	No
OR36	Shannapheasteen	0.0	5	0.0	No
OR37	Bunnagippaun	16.1	5	0.0	No
OR38	Cregg (Moycullen By)	0.1	5	0.0	No
OR39	Cregg (Moycullen By)	0.4	5	0.0	No
OR40	Cregg (Moycullen By)	1.9	5	0.0	No
Ownagappul, County Cork					
OG1	Ardgroom Inward	0.7	1	32.3	Yes
OG2	Barrees	12.2	1	31.8	Yes
OG3	Barrees	43.4	1	28.4	Yes
OG4	Ardgroom Outward	198.0	1	19.9	Yes
OG5	Ballycrovane	92.9	1	15.0	Yes
OG6	Ardgroom Inward	8.2	1	5.2	Yes
OG7	Ardgroom Inward	76.1	1	2.7	Yes
OG8	Barrees	0.1	2	521.5	Yes
OG9	Barrees	0.2	2	169.3	Yes
OG10	Commons East	9.5	2	75.5	No
OG11	Barrees	113.8	2	37.0	No
OG12	Kilcatherine	117.6	2	4.6	No
OG13	Commons East	54.2	2	3.0	No
OG14	Gowlane	45.3	3	1.7	No
OG15	Ardgroom Outward	2.6	5	107.0	No
OG16	Ardgroom Outward	1.8	5	82.0	No
OG17	Gowlane	0.7	5	0	No
OG18	Ardgroom Inward	0.2	5	0	No
OG19	Faunkill and the Woods	0.2	5	0	No
OG20	Shroneberrane	0.8	5	0	No

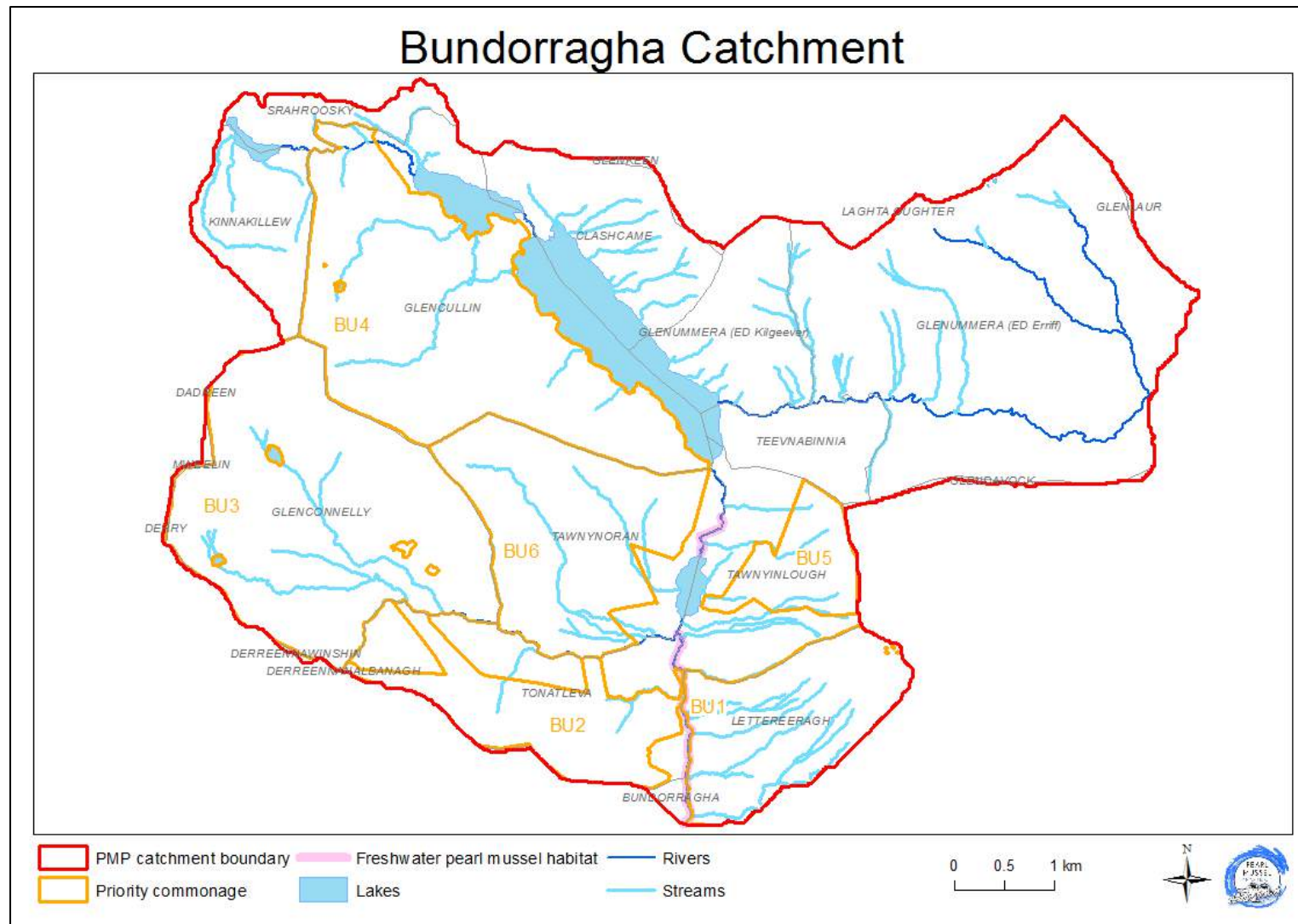


Figure 3: Priority commonage parcels in the Bundorragha catchment¹.

¹ The categories used to determine the priority commonage parcels are shown in Figure 1 and Figure 2.

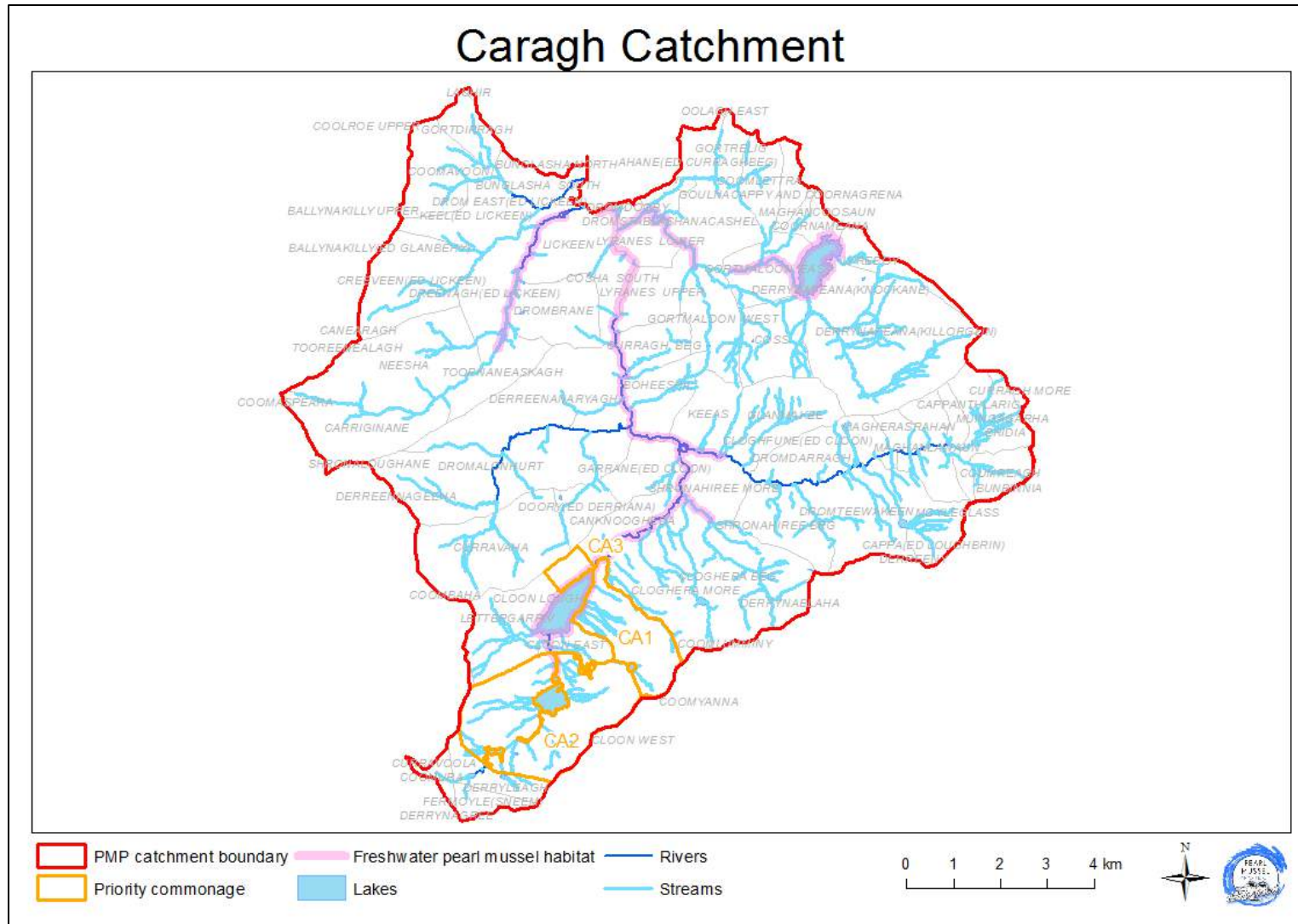


Figure 4: Priority commonage parcels in the Caragh catchment².

² The categories used to determine the priority commonage parcels are shown in Figure 1 and Figure 2.

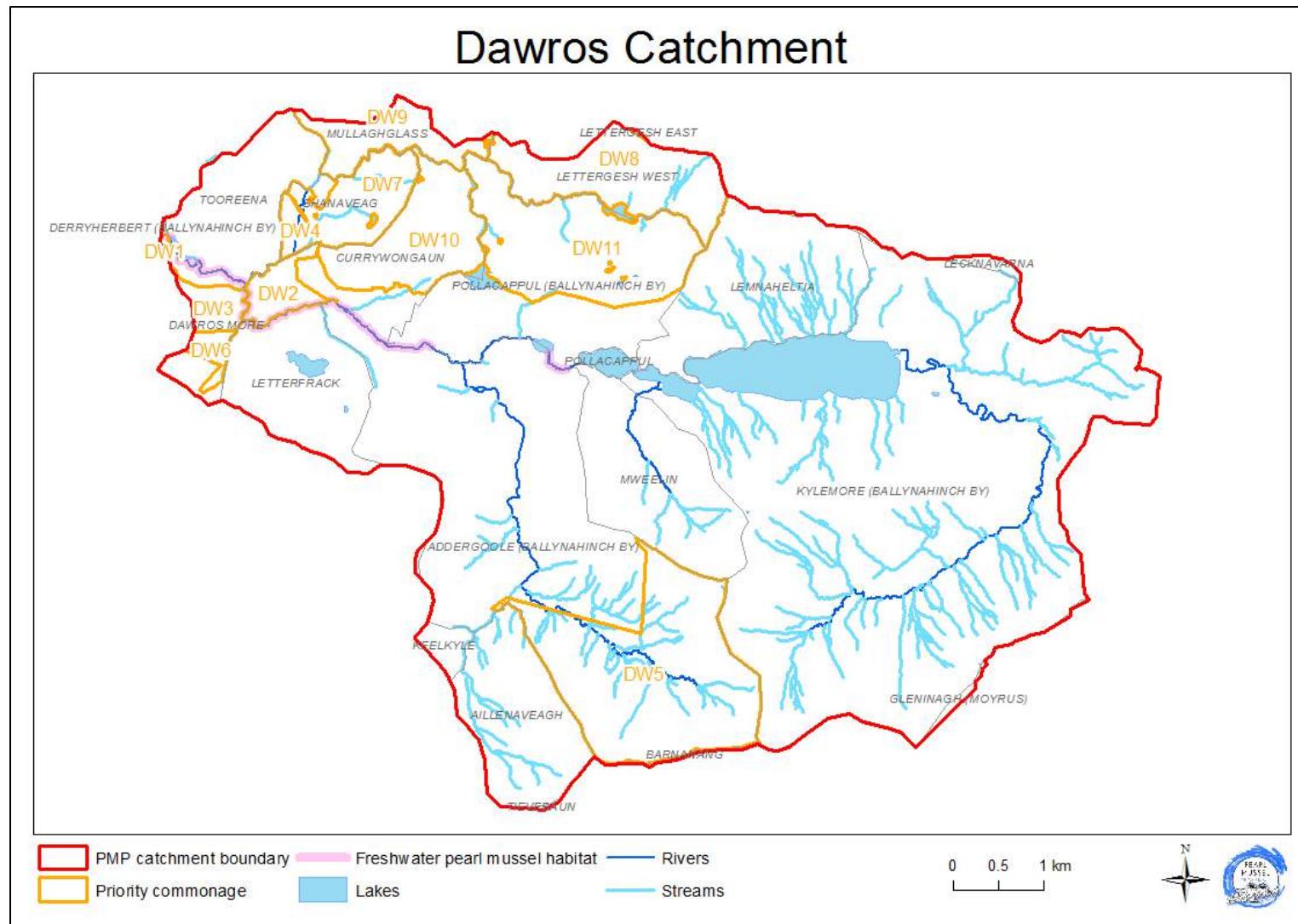


Figure 5: Priority commonage parcels in the Dawros catchment³.

³ The categories used to determine the priority commonage parcels are shown in Figure 1 and Figure 2.

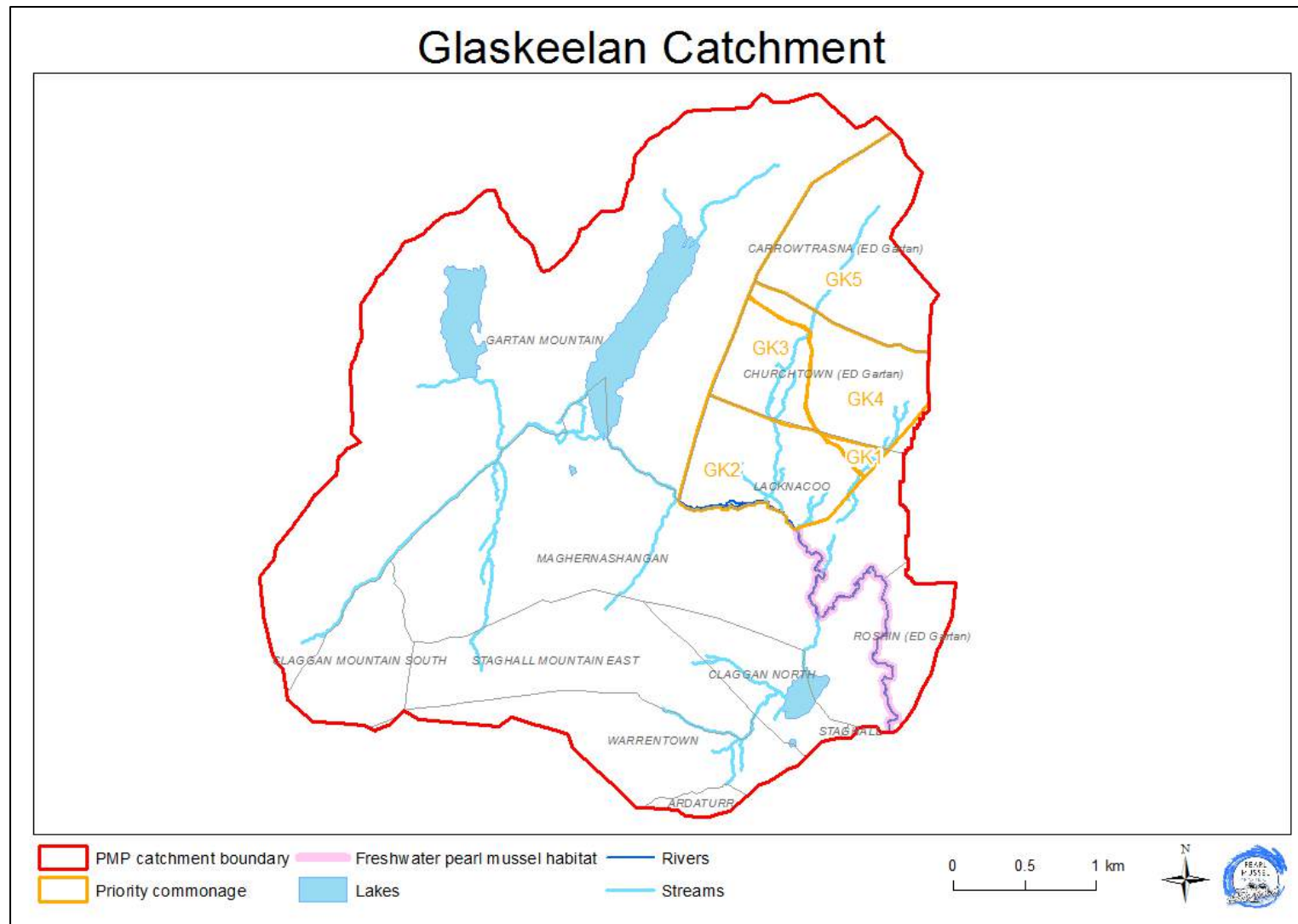


Figure 6: Priority commonage parcels in the Glaskeelan catchment⁴.

⁴ The criteria used to determine the priority commonage parcels are shown in Figure 1 and Figure 2.

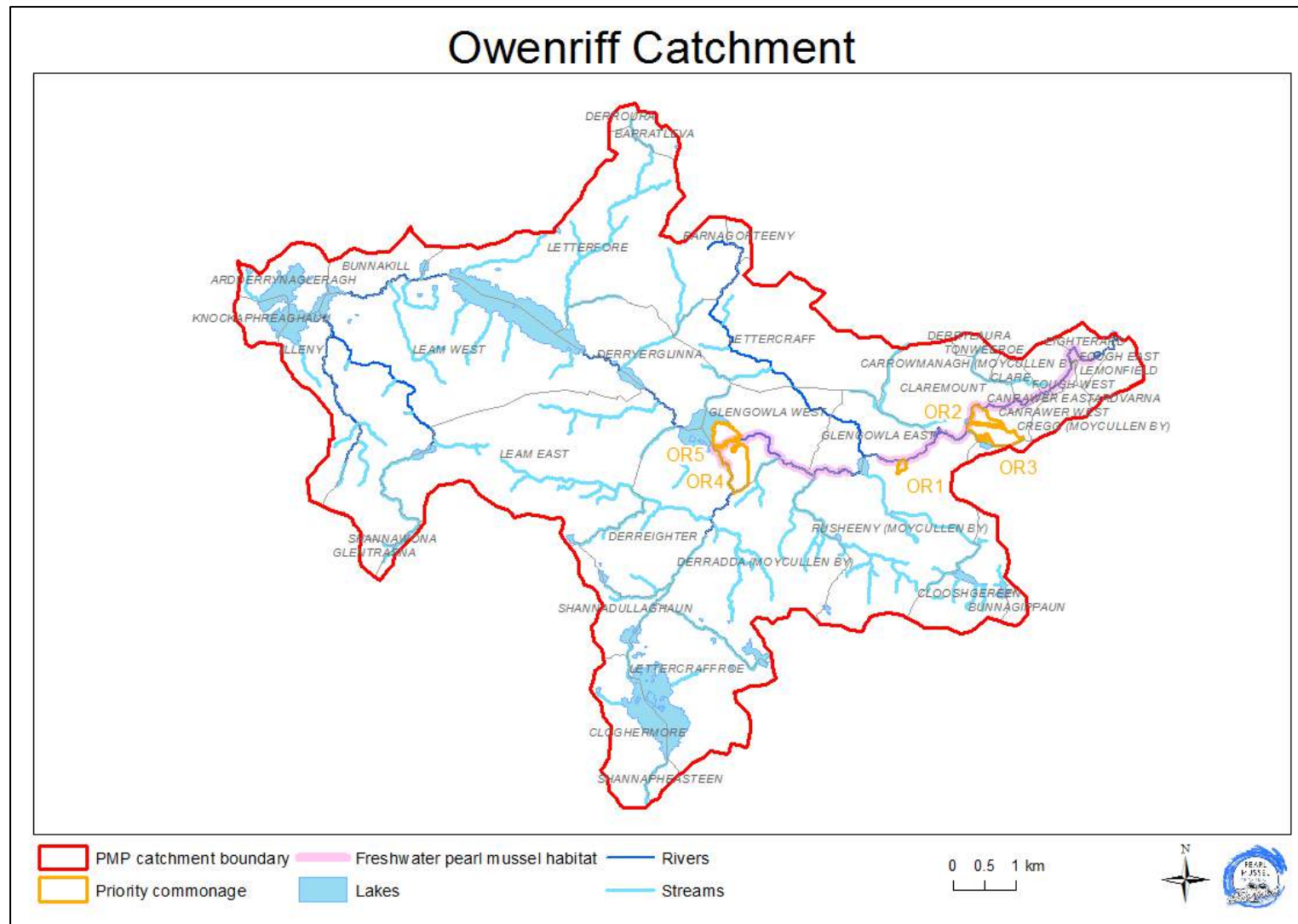


Figure 7: Priority commonage parcels in the Owenriff catchment⁵.

⁵ The categories used to determine the priority commonage parcels are shown in Figure 1 and Figure 2.

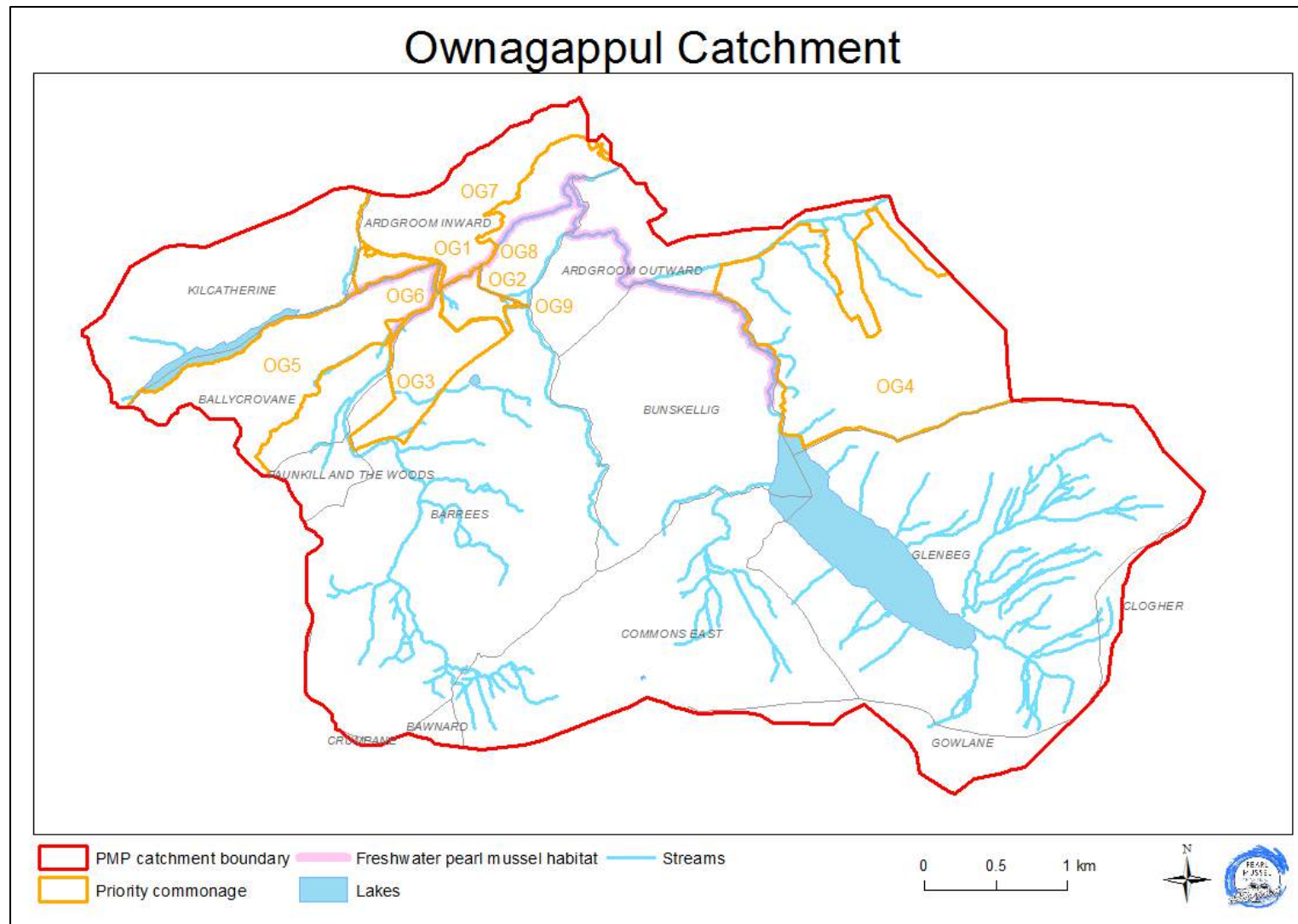


Figure 8: Priority commonage parcels in the Ownagappul catchment⁶.

⁶ The categories used to determine the priority commonage parcels are shown in Figure 1 and Figure 2.