

Pearl Mussel Project

List of Priority Commonages



April 2020

Pearl Mussel Project
Bell Height | Kenmare | Co. Kerry | Ireland
info@pmproject.ie
www.PearlMusselProject.ie



1 CONTENTS

4	INTRODUCTION	1
5	PRIORITY RANKING	1
5.1	PROXIMITY AND CONNECTIVITY TO FRESHWATER PEARL MUSSEL	1
6	PRIORITY COMMONAGES.....	2

2 TABLES

Table 1:	Commonage parcels (priority and non priority) within the eight catchment areas.	3
----------	--	---

3 FIGURES

Figure 1:	Connectivity categories used to rank commonage parcels.	1
Figure 2:	Watercourse to land area ratio used for priority ranking.	2
Figure 3:	Priority commonage parcels in the Bundorragha catchment.	7
Figure 4:	Priority commonage parcels in the Caragh catchment.	8
Figure 5:	Priority commonage parcels in the Currane catchment.....	9
Figure 6:	Priority commonage parcels in the Dawros catchment.	10
Figure 7:	Priority commonage parcels in the Glaskeelan catchment.	11
Figure 8:	Priority commonage parcels in the Kerry Blackwater catchment.	12
Figure 9:	Priority commonage parcels in the Owenriff catchment.	13
Figure 10:	Priority commonage parcels in the Ownagappul catchment.	14

4 Introduction

A total of 181 LPIS commonage parcels occur within, or partly within, the eight Pearl Mussel Programme catchments. A review of all commonage parcels within each catchment has identified 119 priority commonage parcels for inclusion in the Programme in 2020 (this includes 38 parcels identified in 2019 and a further 81 parcels in 2020), (Table 1; Figure 3 - Figure 10), based on their potential contribution towards the overall aims of the project. The process behind selecting these commonages is presented in the following sections.

5 Priority ranking

Initially all commonages were assigned a priority ranking based on proximity and connectivity to freshwater pearl mussel rivers. Following this, each parcel was ranked within these categories depending on the ratio of watercourses to parcel area.

5.1 Proximity and connectivity to freshwater pearl mussel

In order to identify priority commonage parcels, the proximity and connectivity of each commonage parcel to freshwater pearl mussel habitat was assessed. Each commonage parcel was assigned a rank according to one of the following four connectivity categories (listed in order of decreasing priority):

1. Lands adjoining freshwater pearl mussel habitat
2. Lands along EPA mapped watercourses upstream of freshwater pearl mussel habitat
3. Lands along EPA mapped watercourses upstream of a lake, which itself is upstream of freshwater pearl mussel habitat
4. Lands within the catchment, but removed from any EPA mapped watercourse(s)

A final connectivity category (5) was also assigned to parcels that only partly occur within the catchment boundary. The area of these parcels within the catchment boundary does not comprise a viable management unit. These lands are generally peripheral to the catchment boundary and are seen as low priority. Commonage parcels less than 5ha in extent were also considered at the lowest priority level for entry into the Programme, unless they are located in a critical site as determined by the project team.

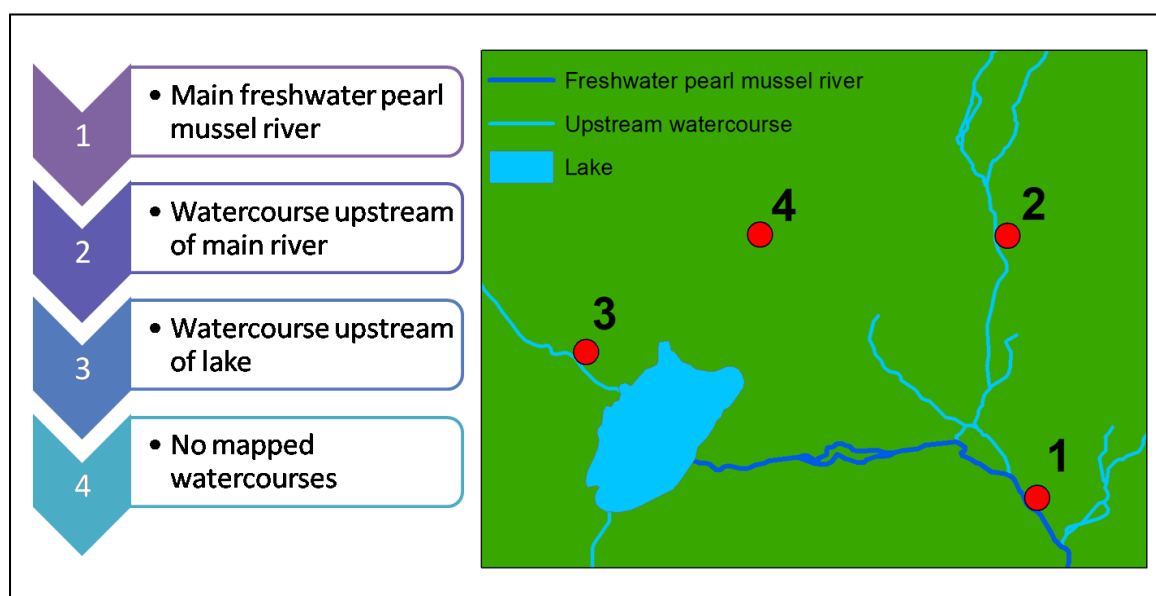


Figure 1: Connectivity categories used to rank commonage parcels.

Following this initial ranking process, parcels are further ranked according to a ratio of mapped watercourse length to land area. This means that within each category the highest rank will be assigned to the commonage parcel with the highest proportion of watercourses in relation to land area (Figure 2).

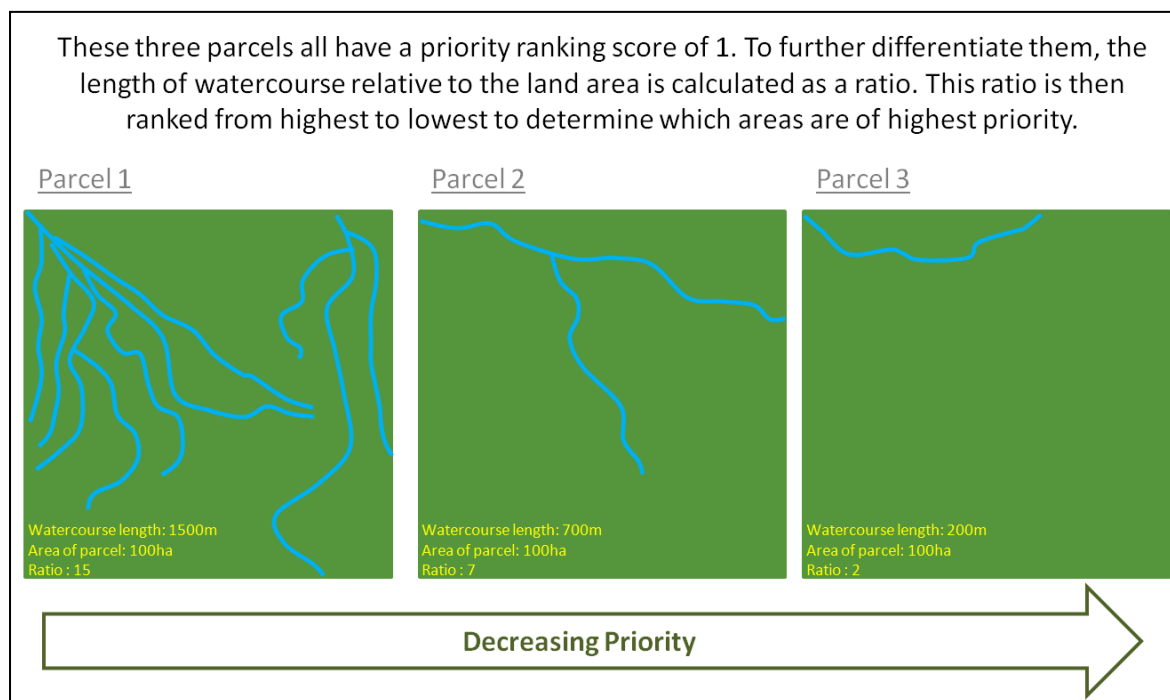


Figure 2: Watercourse to land area ratio used for priority ranking.

6 Priority commonages

The priority list of commonages for 2020 includes the highest ranking commonage parcels in each catchment, while also considering the extent of commonages at the catchment level.

Commonage shareholders in the priority commonage parcels are invited and encouraged to apply to join the Programme in early 2020. The PMP Team will work closely with the commonage shareholders and their advisors with the aim of recruiting the maximum number of active shareholders. There is no guarantee that they will be accepted in the following year(s). Depending on PMP budget availability this list may be extended in future years of the Programme to include lower ranking commonage parcels.

In the case that a farmer with private land within the catchment expresses an interest in joining the programme on the basis of having a shareholding within a priority commonage parcel, then the private land in the farmer's ownership (occurring within the PMP catchment) must also be included within the Programme. In the case where a commonage participant has private lands outside of the catchment, those lands will not be included in the Programme.

Table 1: Commonage parcels (priority and non priority) within the eight catchment areas.

PMP Parcel Code	Townland	Area ha (within catchment)	Proximity & connectivity category	Watercourse length to land area (m/ha)	Priority
Bundorragha, County Mayo					
BU01	Lettereeragh	277.5	1	43	Yes - 2019
BU02	Tonatleva	222.6	1	7.5	Yes - 2019
BU03	Glenconnelly	666.7	2	13.9	Yes - 2019
BU04	Glencullin	671	2	11.2	Yes - 2019
BU05	Tawnyinlough	114.2	2	2	Yes - 2019
BU06	Tawnyinoran	388.4	2	0.1	Yes - 2019
BU07	Glenummera (Ed Kilgeever)	0.7	3	76.3	Yes - 2020
BU08	Clashcame	18.3	3	40.4	Yes - 2020
BU09	Glenummera (Ed Erriff)	212.1	3	31.2	Yes - 2020
BU10	Clashcame	198.5	3	29.4	Yes - 2020
BU11	Kinnakillew	162.8	3	25.6	Yes - 2020
BU12	Glencullin	37.3	3	15	Yes - 2020
BU13	Glenummera (Ed Kilgeever)	56.6	3	9.6	Yes - 2020
BU14	Srahsroosky	79.4	3	9.2	Yes - 2020
BU15	Glenummera (Ed Kilgeever)	80.6	3	5.4	Yes - 2020
BU16	Bundorragha	7	4	0	Yes - 2020
BU17	Derreennanalbanagh	0.3	5	0	No
BU18	Derreennawinshin	3.1	5	0	No
BU19	Derry	1.4	5	0	No
BU20	Glenlaur	1.7	5	0	No
BU21	Glenkeen	10.2	5	0	No
BU22	Laghta Oughter	0	5	0	No
BU23	Dadreen	0.6	5	0	No
BU24	Mweelin	5.9	5	0	No
Caragh, County Kerry					
CA01	Cloon East	292.1	1	31.4	Yes - 2019
CA02	Cloon West	677.2	1	28.3	Yes - 2019
CA03	Lettergarriv	49.7	1	0.6	Yes - 2019
CA04	Dromalohurt	4.4	2	38.8	Yes - 2020
CA05	Boheeshil	32.1	2	39.7	Yes - 2020
CA06	Derryleagh	78.8	2	38.8	Yes - 2020
CA07	Dromalohurt	26.7	2	38.7	Yes - 2020
CA08	Lettergarriv	162.8	2	37.3	Yes - 2020
CA09	Cloghera Beg	199.6	2	37	Yes - 2020
CA10	Coomura	21.5	2	17.9	Yes - 2020
CA11	Derrynafeana (Killorglin)	196.9	2	15.2	Yes - 2020
CA12	Toornaneaskagh	3.4	2	15	Yes - 2020
CA13	Cloghera More	127.4	2	13	Yes - 2020
CA14	Dromalohurt	14.4	2	9.9	Yes - 2020
CA15	Neesha	525.6	2	9.7	Yes - 2020
CA16	Keel (Ed Lickeen)	123.3	2	9.6	Yes - 2020
CA17	Dromalohurt	315.9	2	9.5	Yes - 2020
CA18	Derreenanaryagh	93.8	2	6.1	Yes - 2020
CA19	Carriginane	310.5	2	5.9	Yes - 2020
CA20	Gortdirragh	41.5	2	5.8	Yes - 2020
CA21	Canknoogheda	42.4	2	5.8	Yes - 2020
CA22	Gortdirragh	17.2	2	5.3	Yes - 2020
CA23	Fermoyle (Sneem)	71.3	2	4.8	Yes - 2020
CA24	Dromalohurt	1.7	2	4.1	Yes - 2020
CA25	Maghanlawau	64.4	2	3.6	Yes - 2020
CA26	Dromalohurt	16.7	2	3.5	Yes - 2020
CA27	Curravaha	429.3	2	3.1	Yes - 2020
CA29	Shronahiree Beg	86.4	2	0.1	Yes - 2020
CA30	Derreenanaryagh	106.5	4	1.9	No
CA33	Derreenanaryagh	76.5	4	0	No

PMP Parcel Code	Townland	Area ha (within catchment)	Proximity & connectivity category	Watercourse length to land area (m/ha)	Priority
CA28	Lyreboy	29.8	2	2.9	No
CA31	Maghanlawoun	30	4	0	No
CA32	Gortdirragh	5.8	4	0	No
CA34	Cloghera Beg	0.8	5	0	No
CA35	Lauhir	3.1	5	0	No
CA36	Coombaha	0	5	0	No
CA37	Derreennageeha	0.7	5	0	No
CA38	Ballynakilly (Ed Glanbehy)	0.6	5	0	No
CA39	Ballynakilly Upper	0.5	5	0	No
CA40	Canearagh	1.4	5	0	No
CA41	Coolroe Upper	0.3	5	0	No
Currane, County Kerry					
CU01	Cloghvoola	61.8	2	38.7	Yes - 2020
CU02	Tooreenyduneen	126.2	2	19.4	Yes - 2020
CU03	Inchfarrannagleragh Glebe	85.3	3	15.3	Yes - 2020
CU04	Maghygreenane	475.1	3	20.4	Yes - 2020
CU05	Graigues	62.5	3	18.5	Yes - 2020
CU06	Coomavoher	208.6	3	16.3	Yes - 2020
CU07	Cloonaghlin	330.9	3	0.9	Yes - 2020
CU08	Coomnahorna East	12.2	5	18.2	No
CU09	Slievenashaska	14.3	5	10.9	No
CU10	Moneyflugh	6	5	2.2	No
CU11	Staigue	7.7	5	1.9	No
CU12	Bohacogram	1.7	5	0	No
CU13	Dromtine	0.1	5	0	No
CU14	Gowlanes	3.1	5	0	No
CU15	Gowlanes	1	5	0	No
CU16	Cahersavane	0.8	5	0	No
CU17	Dromnakilly	16.8	5	0	No
CU18	Bunaderreen	1.3	5	0	No
Dawros, County Galway					
DA01	Dawros More	2	1	51.2	Yes - 2019
DA02	Currywongaun	41.4	1	40	Yes - 2019
DA03	Dawros More	31.3	1	6.1	Yes - 2019
DA04	Shanaveag	18.4	2	35.1	Yes - 2019
DA06	Dawros More	17	2	28.5	Yes - 2019
DA07	Shanaveag	90	2	23.9	Yes - 2019
DA08	Lettergesh West	173.7	2	11.7	Yes - 2019
DA09	Mullaghglass	81.6	2	10.4	Yes - 2019
DA10	Currywongaun	154.1	2	5.1	Yes - 2019
DA11	Pollacappul (Ballynahinch By)	256.6	2	4	Yes - 2019
DA13	Kylemore (Ballynahinch By)	239.8	3	48.8	Yes - 2020
DA15	Kylemore (Ballynahinch By)	422.1	3	35.3	Yes - 2020
DA17	Kylemore (Ballynahinch By)	96.7	3	20.2	Yes - 2020
DA19	Lecknavarna	11.8	5	17.8	No
DA20	Lettergesh East	0.5	5	0	No
DA21	Lettergesh East	0	5	0	No
Glaskeelan, County Donegal					
GL01	Lacknaco	5.2	2	65.3	Yes - 2019
GL02	Lacknaco	73.5	2	39.7	Yes - 2019
GL03	Churchtown (Ed Gartan)	42.9	2	30.9	Yes - 2019
GL04	Churchtown (Ed Gartan)	65.6	2	11.3	Yes - 2019
GL05	Carrowtrasna (Ed Gartan)	111	2	8	Yes - 2019
GL06	Staghall Mountain East	2	3	157.6	Yes - 2020
GL07	Claggan North	6.5	3	79.9	Yes - 2020
GL08	Warrentown	13.7	3	48.4	Yes - 2020
GL09	Claggan North	26	3	20.2	Yes - 2020

PMP Parcel Code	Townland	Area ha (within catchment)	Proximity & connectivity category	Watercourse length to land area (m/ha)	Priority
GL10	Staghall Mountain East	44.1	3	2.2	Yes - 2020
GL11	Warrentown	61.1	3	0.7	Yes - 2020
GL12	Ardaturr	5.9	4	1.6	Yes - 2020
GL13	Ardaturr	2.6	4	0	Yes - 2020
GL14	Maghernashangan	23.6	4	0	Yes - 2020
GL15	Claggan Mountain South	0.1	5	0	No
Kerry Blackwater, County Kerry					
KB01	Maulcallee	27.2	2	29.8	Yes - 2020
KB02	Derreenafoyle	11	5	0	No
Owngappul, County Cork					
OG01	Ardgroom Inward	0.7	1	32.3	Yes - 2019
OG02	Barrees	12.2	1	31.8	Yes - 2019
OG03	Barrees	43.4	1	28.4	Yes - 2019
OG04	Ardgroom Outward	198	1	19.9	Yes - 2019
OG05	Ballycrovane	92.9	1	15	Yes - 2019
OG06	Ardgroom Inward	8.2	1	5.2	Yes - 2019
OG07	Ardgroom Inward	76.1	1	2.7	Yes - 2019
OG08	Barrees	0.1	2	521.5	Yes - 2019
OG09	Barrees	0.2	2	169.3	Yes - 2019
OG10	Commons East	9.5	2	75.5	Yes - 2020
OG11	Barrees	113.8	2	37	Yes - 2020
OG12	Kilcatherine	117.6	2	4.6	Yes - 2020
OG13	Commons East	54.2	2	3	Yes - 2020
OG15	Ardgroom Outward	2.6	2	107	Yes - 2020
OG16	Ardgroom Outward	1.8	2	82	Yes - 2020
OG14	Gowlane	45.3	3	1.7	No
OG17	Gowlane	0.7	5	0	No
OG19	Faunkill and the Woods	0.2	5	0	No
OG20	Shronebirrane	0.8	5	0	No
Owenriff, County Galway					
OR01	Rusheeny (Moycullen By)	2.2	1	64.4	Yes - 2019
OR02	Canrawer West	8	1	60.2	Yes - 2019
OR03	Canrawer West	17.3	1	23.3	Yes - 2019
OR04	Glengowla West	25.3	1	22.6	Yes - 2019
OR05	Glengowla West	10.9	1	2.9	Yes - 2019
OR06	Glengowla West	0.8	2	264	Yes - 2020
OR07	Rusheeny (Moycullen By)	0.6	2	217.8	Yes - 2020
OR08	Rusheeny (Moycullen By)	0.6	2	174.3	Yes - 2020
OR09	Rusheeny (Moycullen By)	3.1	2	85.8	Yes - 2020
OR10	Illeny	61.8	2	32.5	Yes - 2020
OR11	Rusheeny (Moycullen By)	84.1	2	32	Yes - 2020
OR12	Rusheeny (Moycullen By)	34.5	2	27.6	Yes - 2020
OR13	Rusheeny (Moycullen By)	33.3	2	25.5	Yes - 2020
OR14	Shannadullaghaun	84.1	2	24.5	Yes - 2020
OR15	Rusheeny (Moycullen By)	131	2	24.3	Yes - 2020
OR16	Clooshgereen	98.8	2	22.7	Yes - 2020
OR17	Glengowla West	21.6	2	17.1	Yes - 2020
OR18	Lettercraff	342.6	2	14.2	Yes - 2020
OR19	Lettercraffroe	98.3	2	9.1	Yes - 2020
OR20	Glengowla West	28.8	2	7.9	Yes - 2020
OR21	Claremount	38.4	2	1.1	Yes - 2020
OR22	Rusheeny (Moycullen By)	34.2	2	0.1	Yes - 2020
OR24	Derryerlinna	176.6	2	1.2	Yes - 2020
OR23	Glengowla West	0.3	2	0	No
OR25	Lettercraffroe	55	3	0.4	No
OR26	Cloghermore	28.8	3	0.3	No
OR27	Rusheeny (Moycullen By)	0.1	3	0	No

PMP Parcel Code	Townland	Area ha (within catchment)	Proximity & connectivity category	Watercourse length to land area (m/ha)	Priority
OR28	Rusheeny (Moycullen By)	1.6	3	0	No
OR29	Rusheeny (Moycullen By)	6.1	3	0	No
OR30	Glengowla West	0.2	4	0	No
OR31	Glengowla West	5.8	4	0	No
OR32	Glengowla West	4.7	4	0	No
OR33	Barnagorteeny	17.2	5	24.5	No
OR34	Glentrasna	19.9	5	23.3	No
OR35	Cloghermore	21.5	5	2.7	No
OR36	Shannapheasteen	0	5	0	No
OR37	Bunnagippaun	16.1	5	0	No
OR38	Cregg (Moycullen By)	0.1	5	0	No
OR39	Cregg (Moycullen By)	0.4	5	0	No
OR40	Cregg (Moycullen By)	1.9	5	0	No

Notes: CA28 Lyreboy was not selected as a priority due to its inclusion within the Reeks Project EIP.

OR23 was not selected as priority due to its small extent and isolation from other commonage parcels. CA30 Derreenanaryagh and CA33 Derreenanaryagh were both added in April 2020 following review of connectivity. CA30 was reassigned correctly as connectivity category 2, while the adjoining CA33 was also included as it forms part of the same management unit.

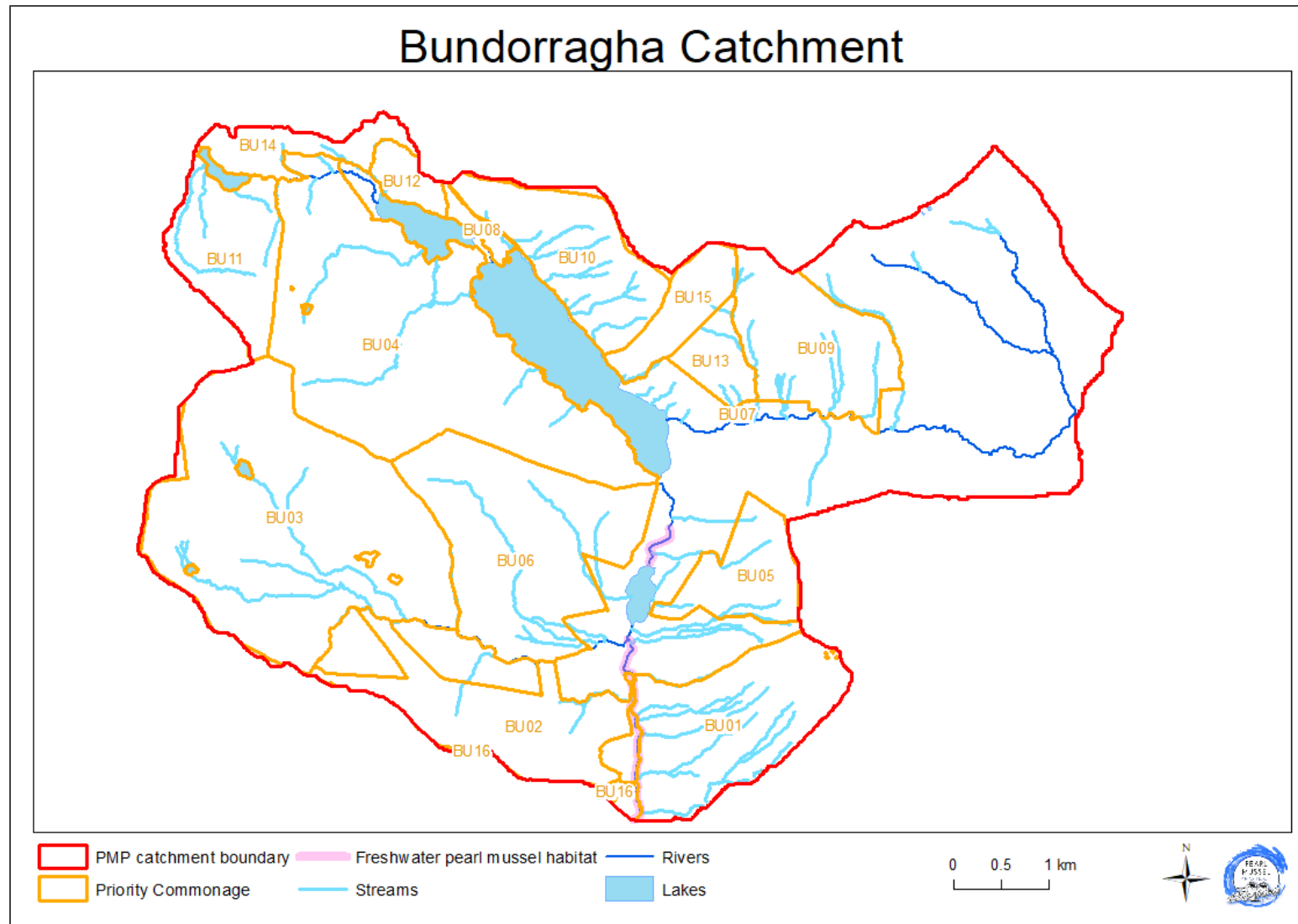


Figure 3: Priority commonage parcels in the Bundorragha catchment¹.

¹ The categories used to determine the priority commonage parcels are shown in Figure 1 and Figure 2.

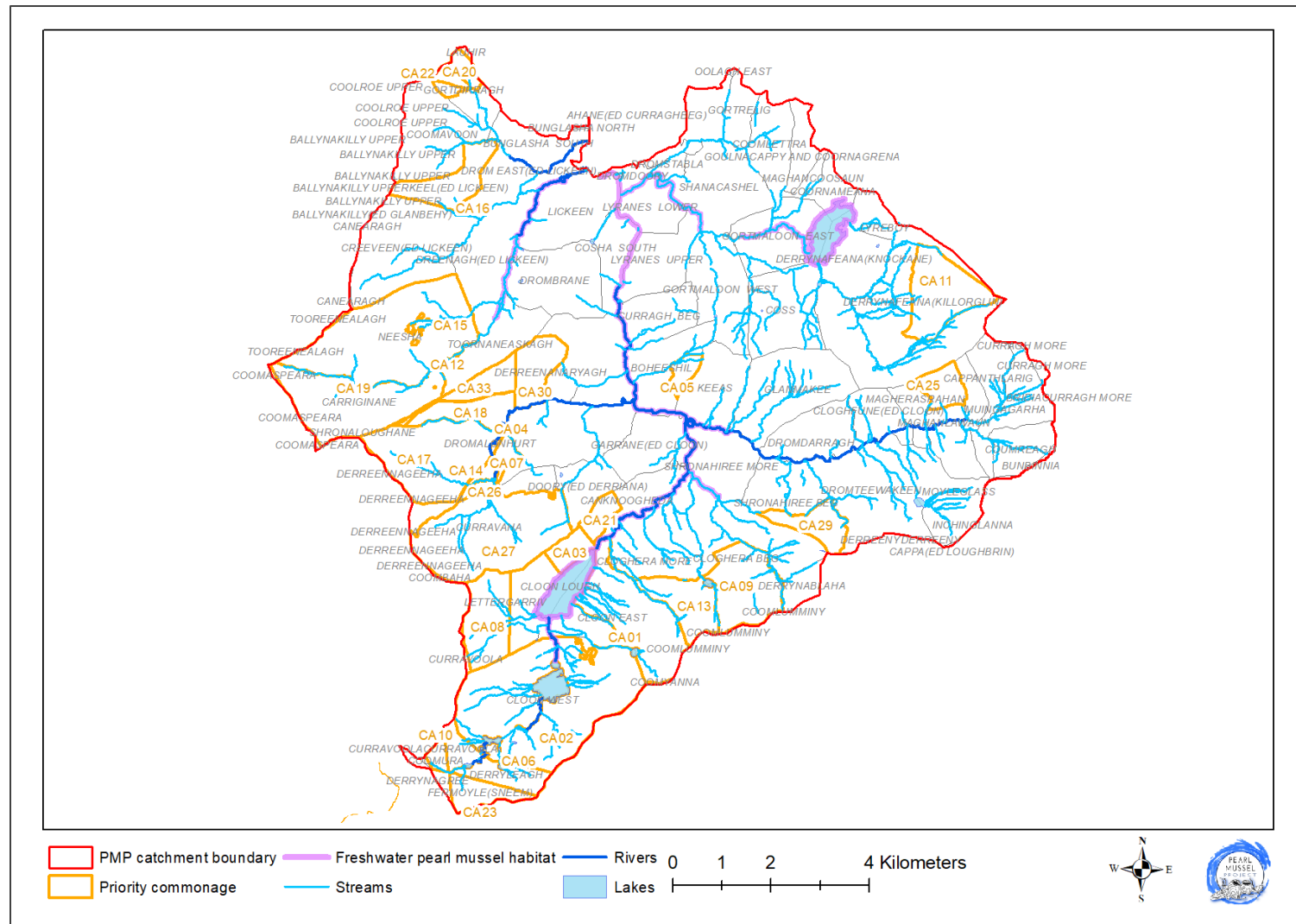


Figure 4: Priority commonage parcels in the Caragh catchment².

² The categories used to determine the priority commonage parcels are shown in Figure 1 and Figure 2.

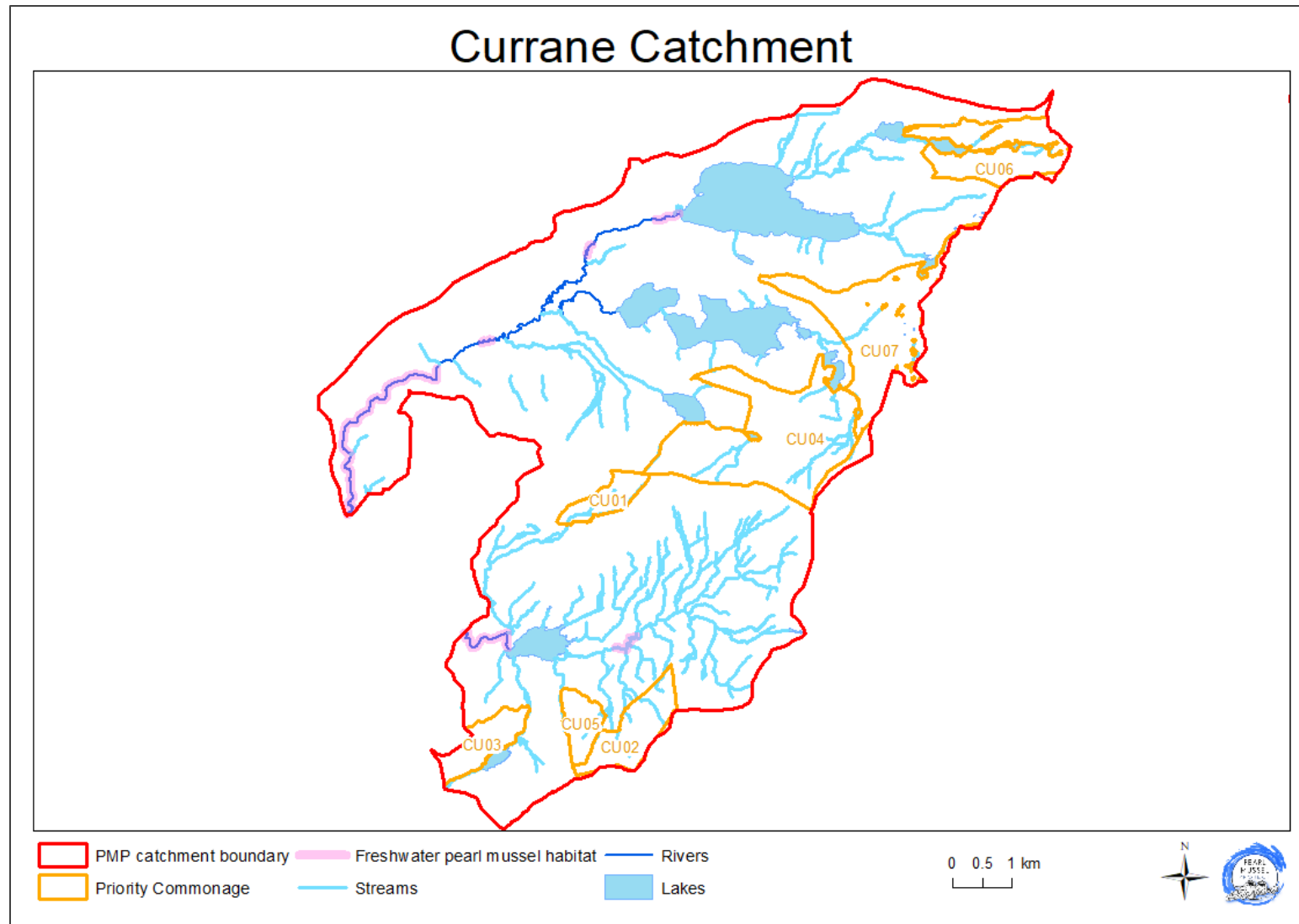


Figure 5: Priority commonage parcels in the Currane catchment³.

³ The categories used to determine the priority commonage parcels are shown in Figure 1 and Figure 2.

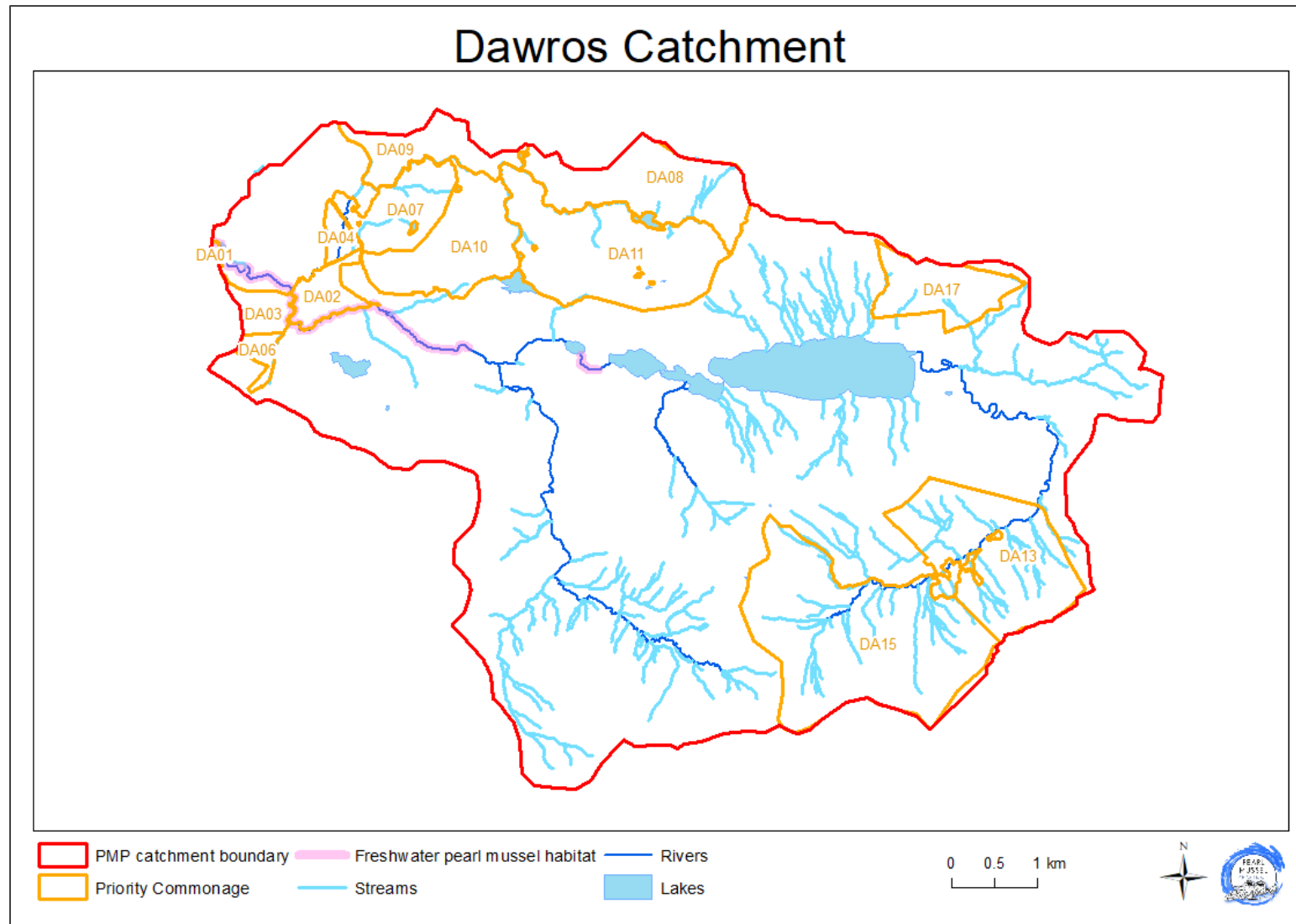


Figure 6: Priority commonage parcels in the Dawros catchment⁴.

⁴ The categories used to determine the priority commonage parcels are shown in Figure 1 and Figure 2.

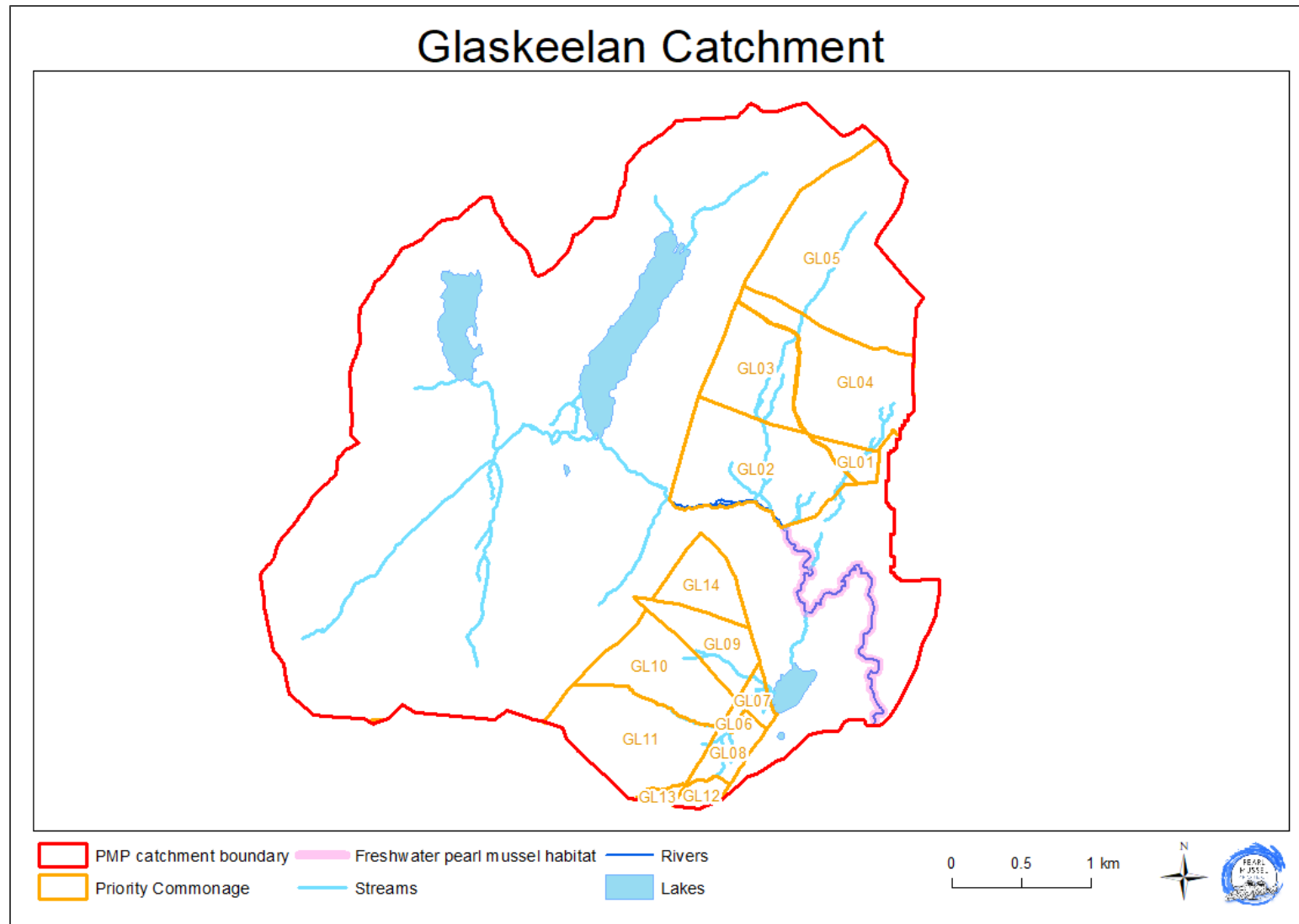


Figure 7: Priority commonage parcels in the Glaskeelan catchment⁵.

⁵ The criteria used to determine the priority commonage parcels are shown in Figure 1 and Figure 2.

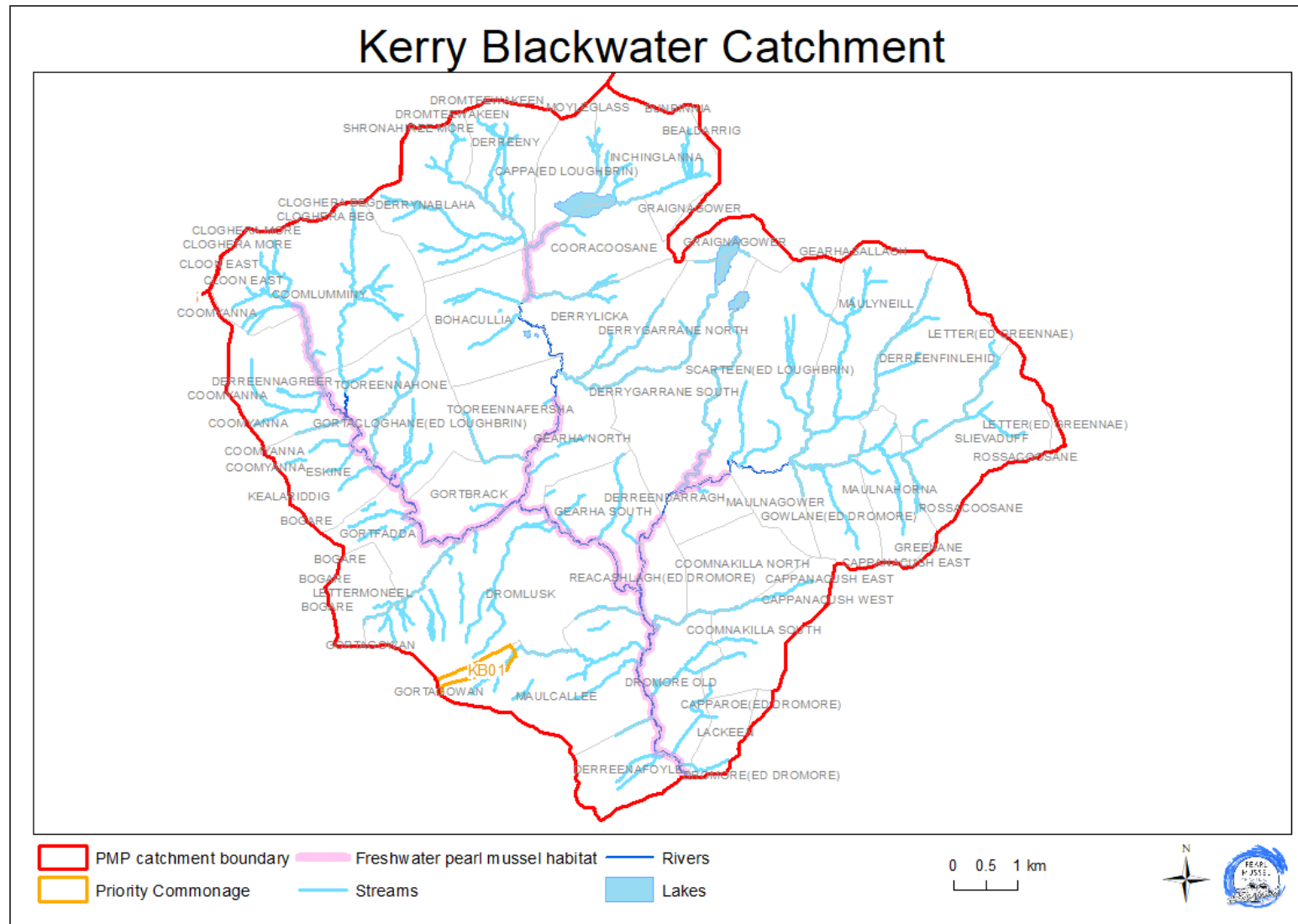


Figure 8: Priority commonage parcels in the Kerry Blackwater catchment⁶.

⁶ The categories used to determine the priority commonage parcels are shown in Figure 1 and Figure 2.

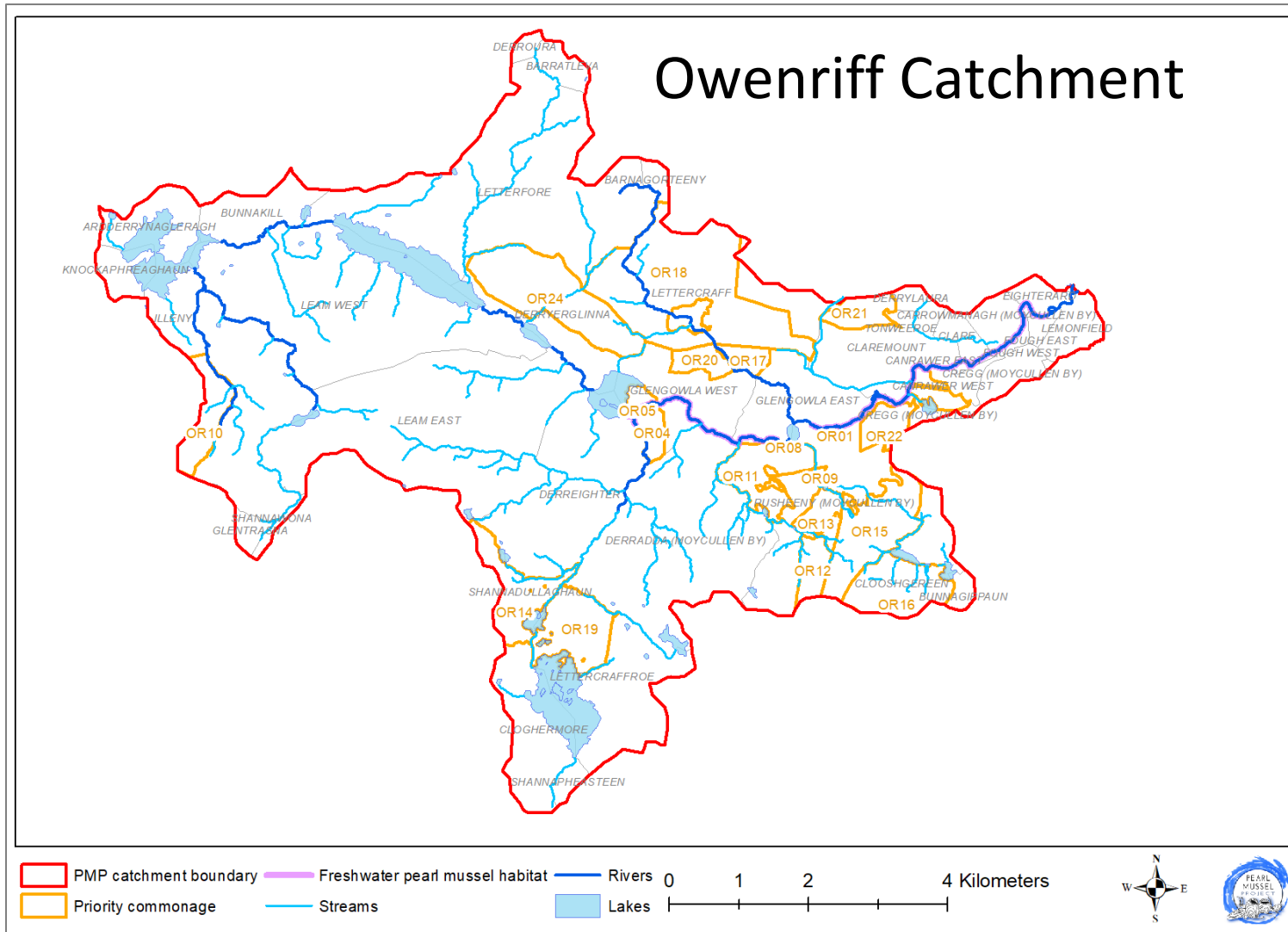


Figure 9: Priority commonage parcels in the Owenriff catchment⁷.

⁷ The categories used to determine the priority commonage parcels are shown in Figure 1 and Figure 2.

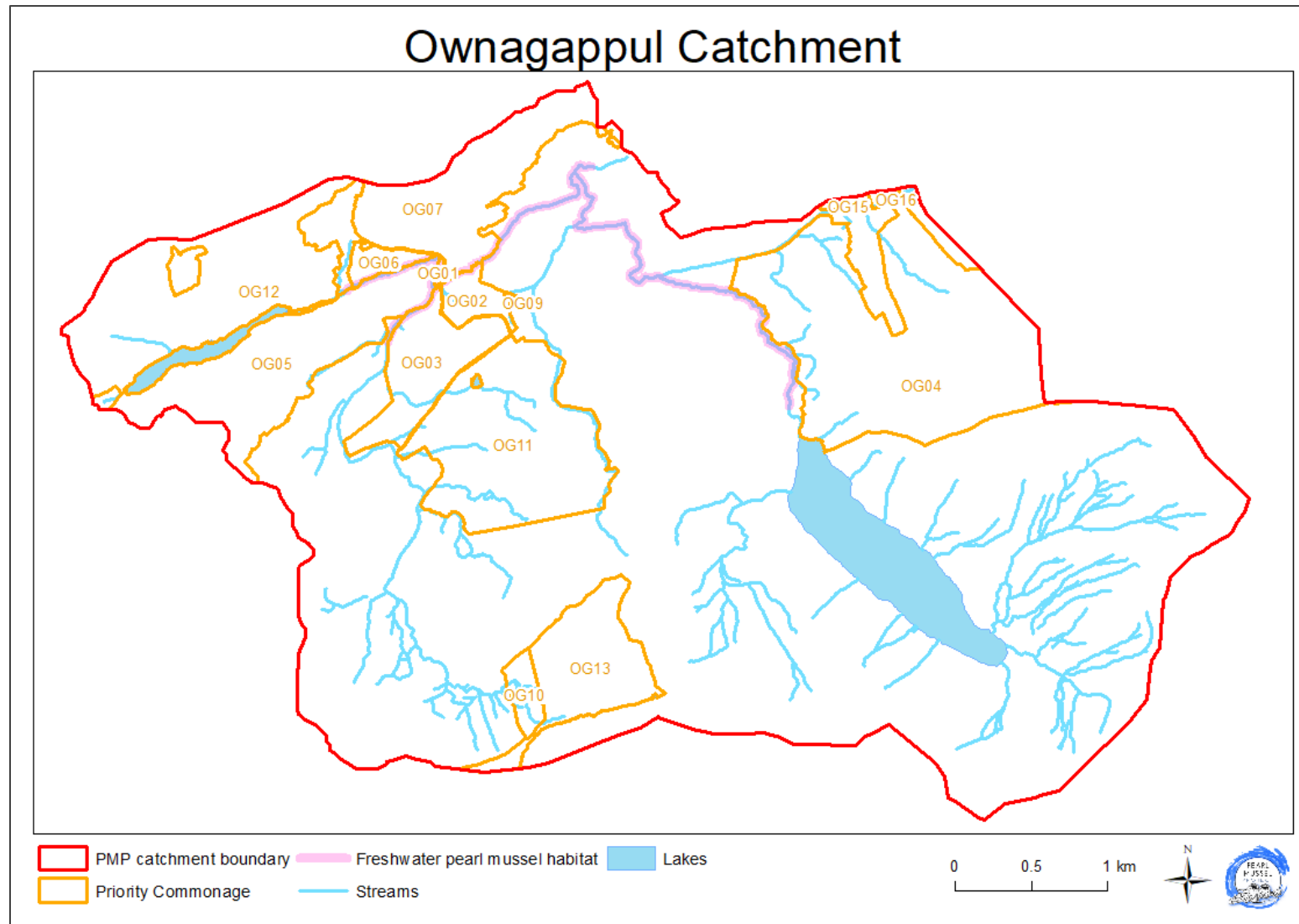


Figure 10: Priority commonage parcels in the Ownagappul catchment⁸.

⁸ The categories used to determine the priority commonage parcels are shown in Figure 1 and Figure 2.